

SLC



Industrial Temp SD100I SD Card

Featuring excellent durability and operating temperature flexibility, Transcend's Industrial Temp SD100I cards are ideal for demanding industrial applications such as POS terminals and portable devices equipped with an SD memory card slot.

Share

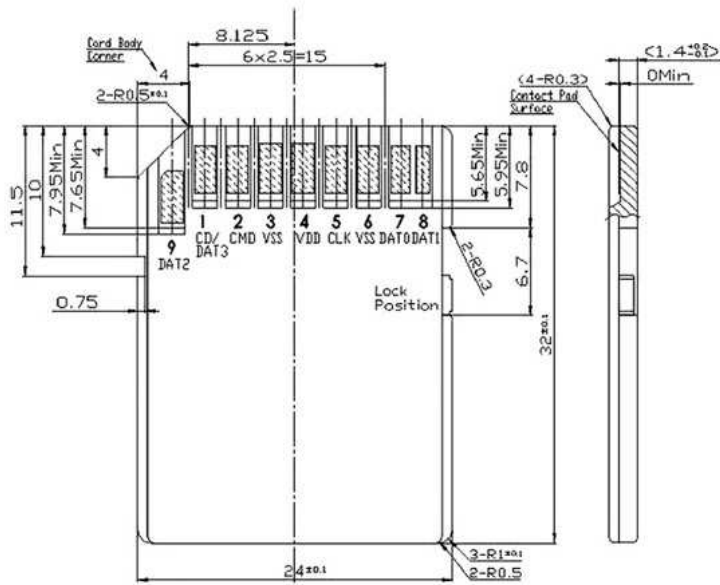


Features

- RoHS compliant product
- Compatible with SD Specification Ver. 3.01 (Not compatible with UHS-I specification)
- Mechanical Write Protection Switch
- Built-in ECC, Wear leveling and power failure protection functions
- Support SD command class 0,2,4,5,7,8
- Support ESD IEC 61000-4-2
- Card Lid material: PC + ABS



Specifications



Interface (connector)	SD flash card connector
Form Factor	SD flash card
Dimensions	24mm x 32mm x 2.1mm
Flash Type	SLC
Capacity	128MB / 256MB / 512MB / 1GB / 2GB
Max. R/W Performance* (Vary by density)	Read: 17MB/s, Write: 13MB/s
Operating Voltage	2.7V~3.6V
Power Consumption	0.72W
Operating Temperature	-40°C ~ 85°C
Storage Temperature	-40°C ~ 85°C
Humidity	0% ~ 95%
Shock	Acceleration 490m/s ² ; standard holding time 11 ms, semi-sine wave, velocity change 3.44 m/s
Vibration	20G (Peak-to-Peak), 20Hz to 2000Hz(Frequency)
MTBF	>3,000,000 hours
Warranty	Two-year Limited Warranty *Please access here (/Warranty) for more information about Transcend Warranty Policy.

*Note Speed may vary due to host hardware, software and usage.

Close more

Due to the complexity and variety of industrial applications, Transcend cannot guarantee 100% compatibility with all platforms and under all scenarios.

For special applications and environments, it is strongly suggested to contact Transcend beforehand for clarification.

Order Information