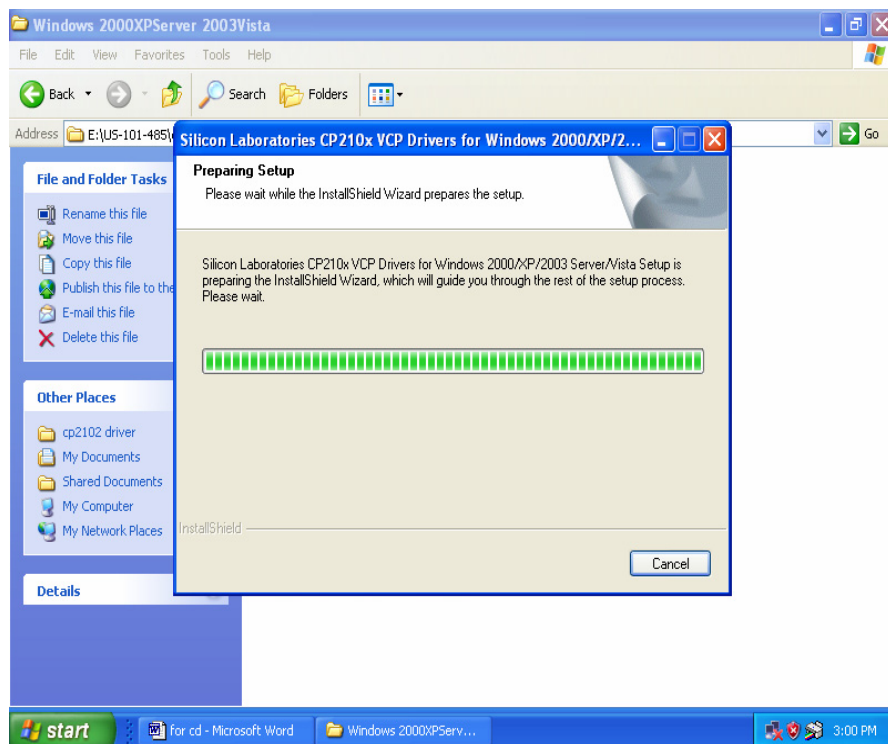


# USB to RS-485/422 Converter

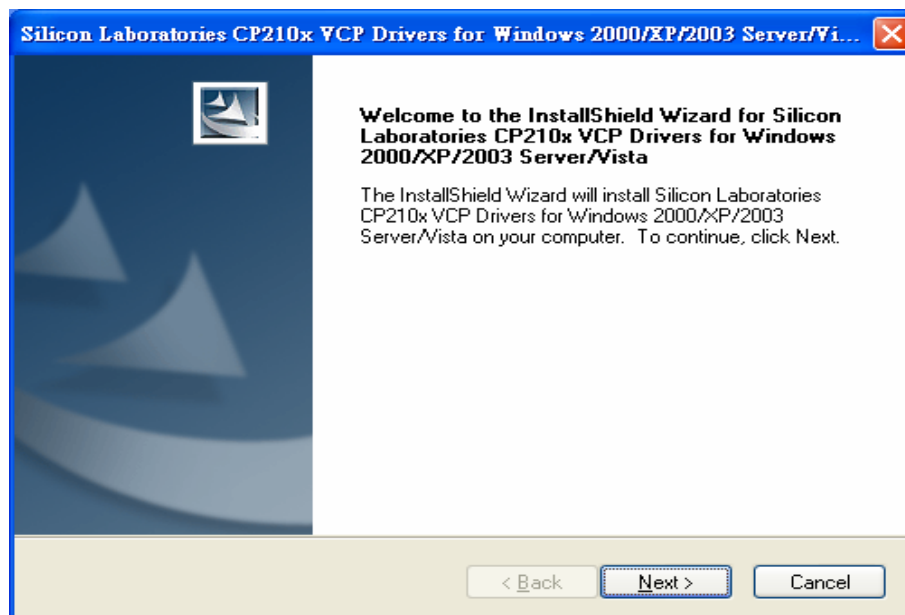
## Manual for Installation

1. Do NOT connect the device yet to PC.
2. Insert the CD to CD drive and find the accordant OS of driver for installation. Here below is the example if you want to install to a PC with Windows XP OS.

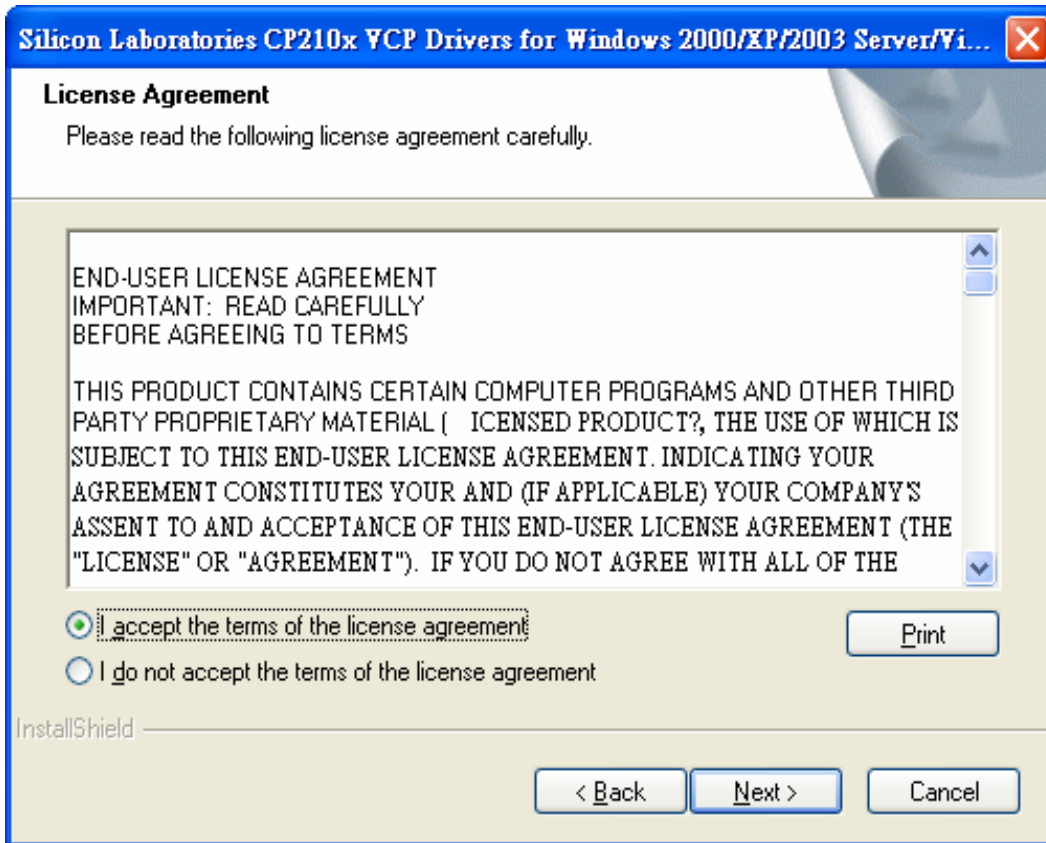
Execute [CP210x\\_VCP\\_Win2K\\_XP\\_S2K3.exe](#)



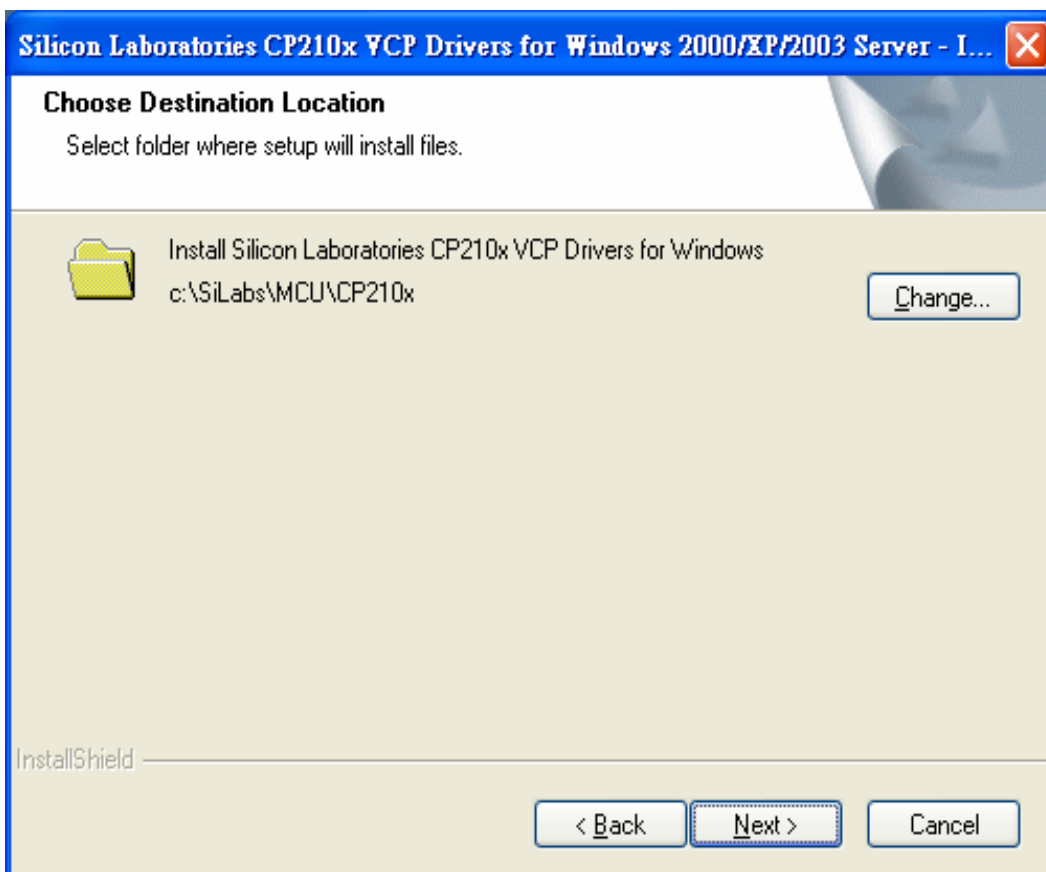
3. Click "Next"



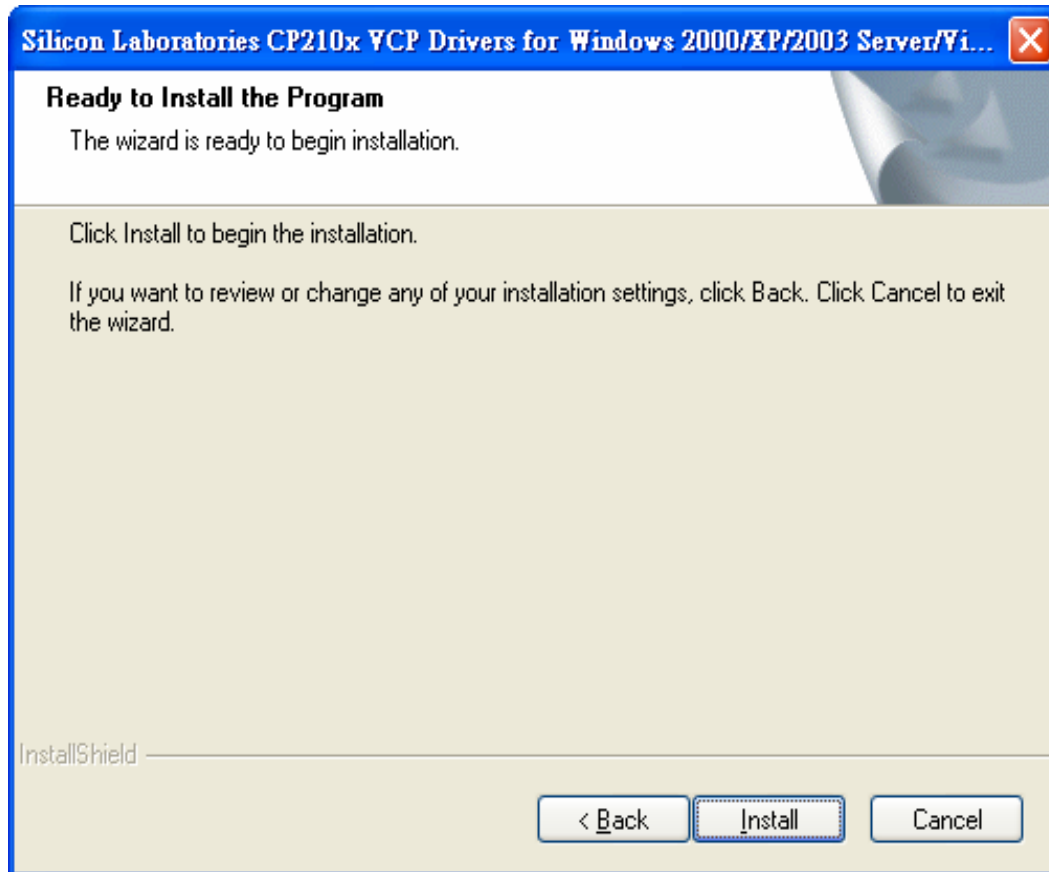
4. Choose “I accept ...” and click “Next”



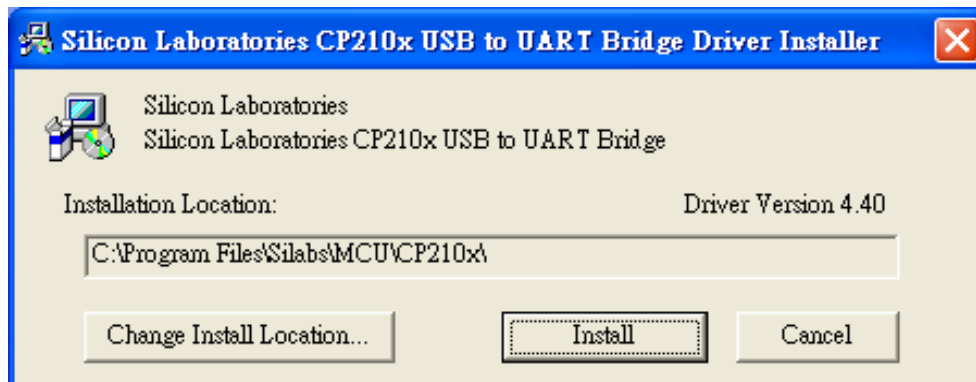
5. Choose destination location (Initial value) then click next.



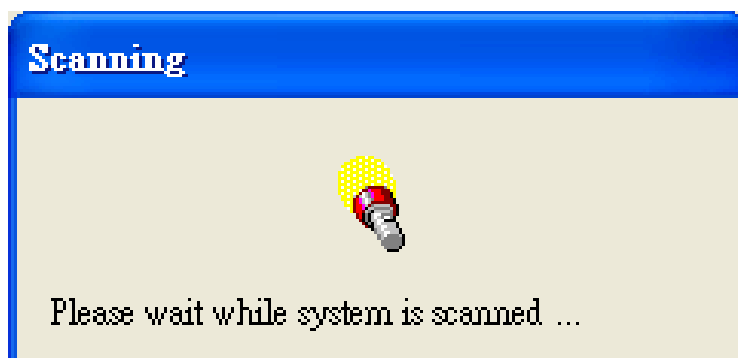
## 6. .Click “Install”



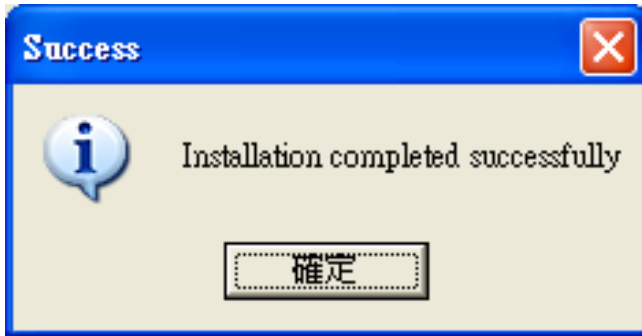
## 7. Click “Install”



## 8. Scanning



## 9. Installation completed successfully



## 10. Click “Finish” to finish installation.

