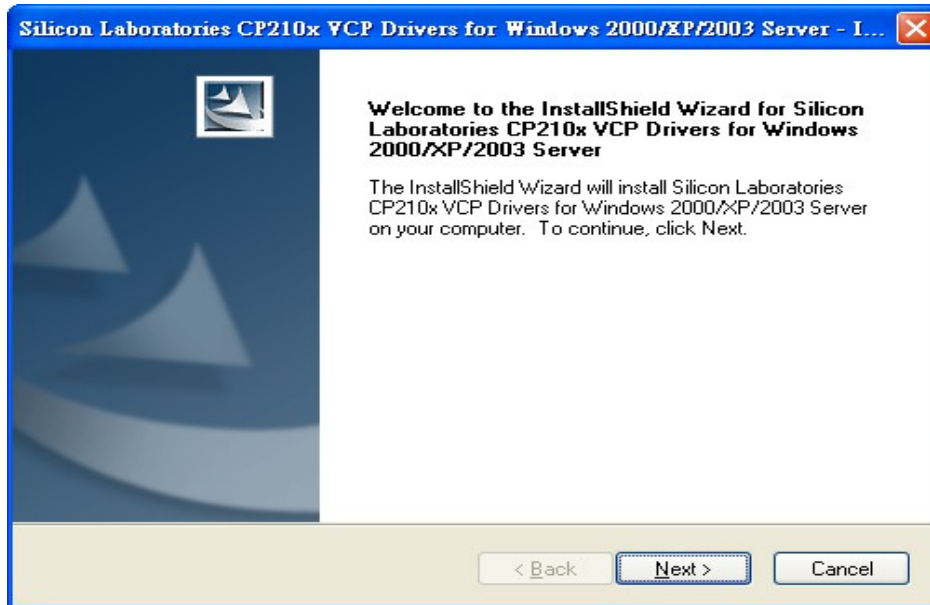


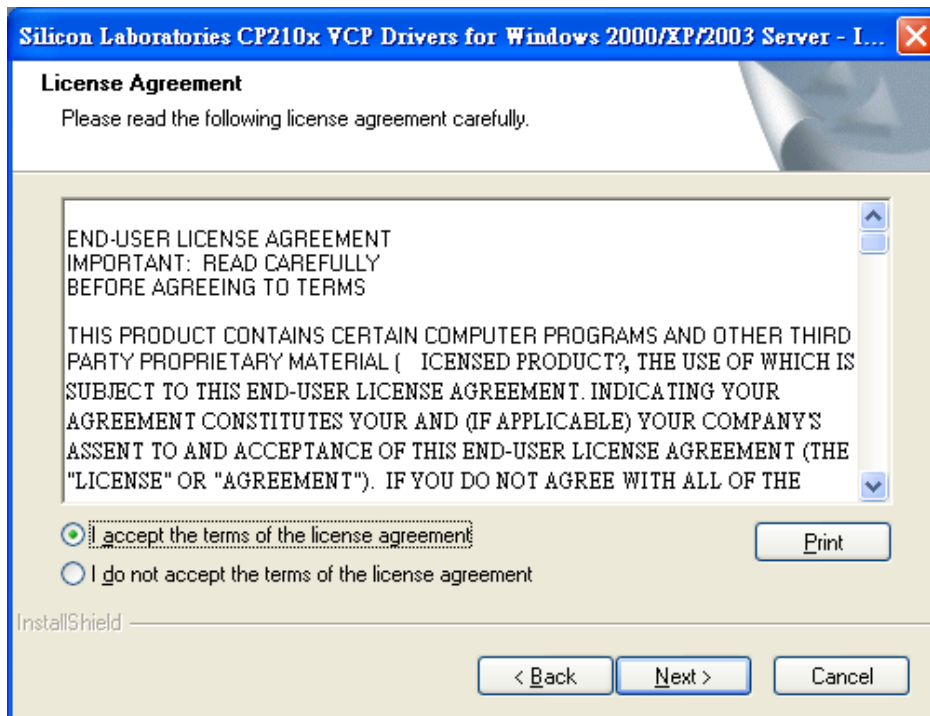
RS-232/422/485 to USB Isolated Converter

Quick Installation Guide

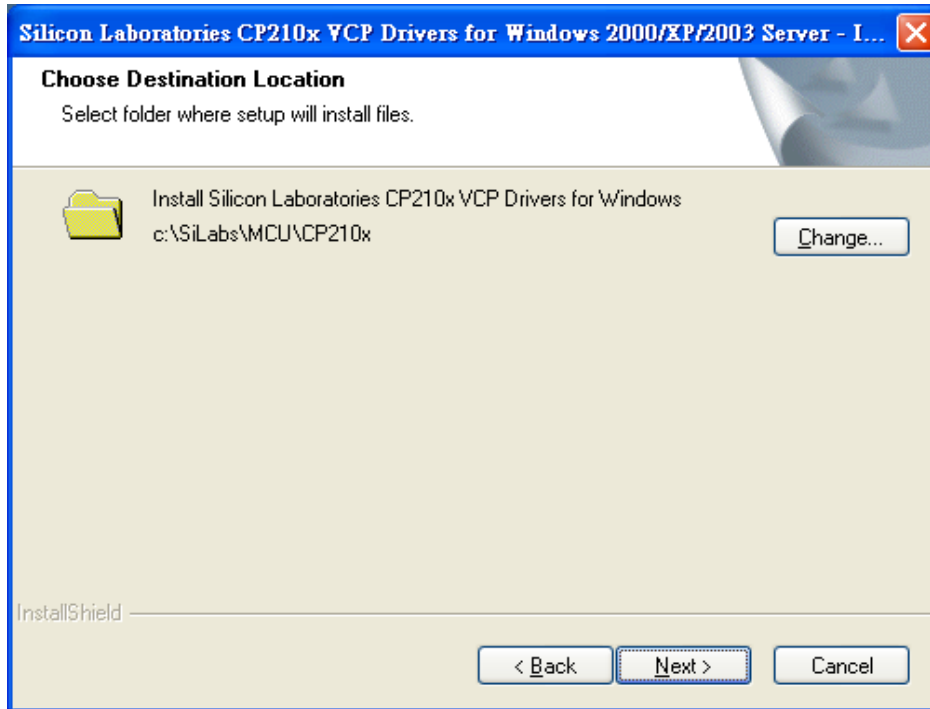
1. Choose the right files from accordant Operation System from CD-ROM
2. Run **CP210x_VCP_Win2K_XP_S2K3.exe**
3. Click on **<NEXT>**



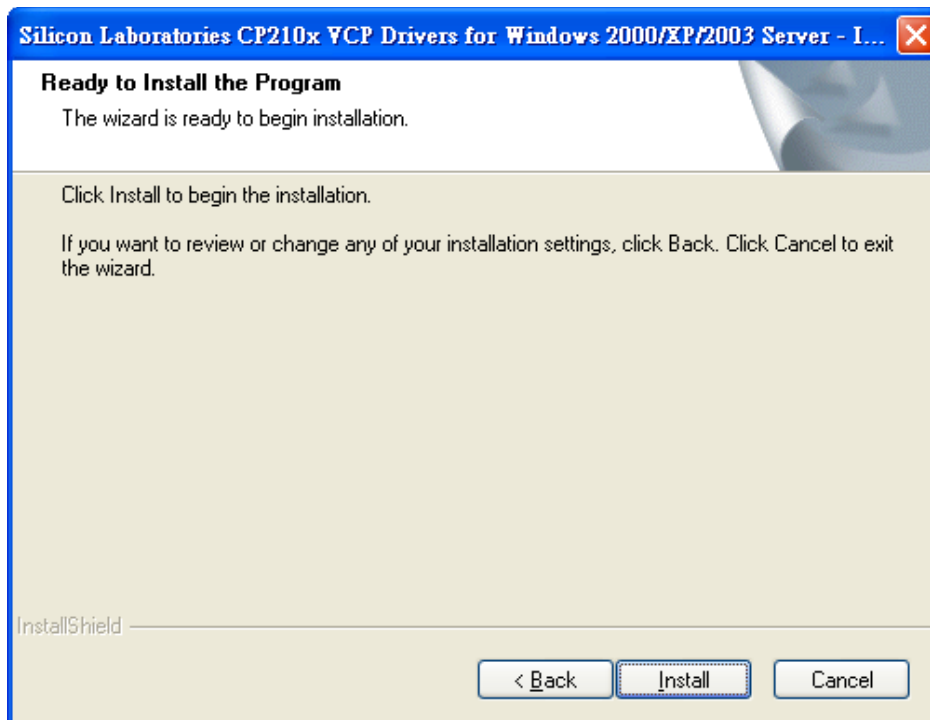
4. Choose **<I Accept the terms>**, and click on **<Next>**.



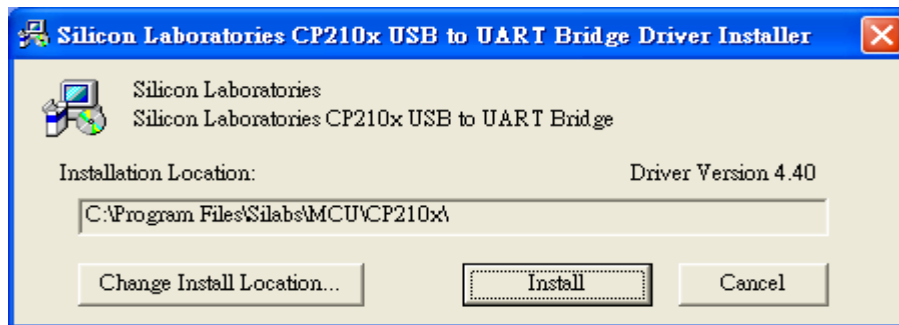
5. Change or keep the default path for installation, and click on <Next>



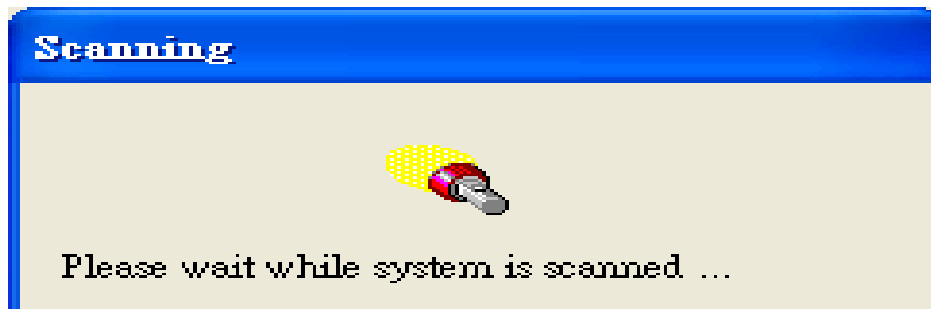
6. Click on <Install> to begin installation.



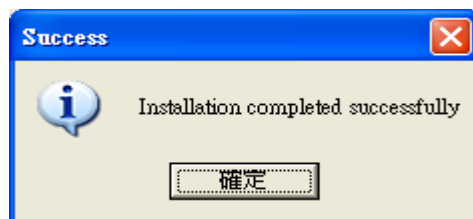
7. Change or keep the default Install Location and click on <Install>



8. Now system will begin to scan the hardware



9. Click on <Enter> or <OK> when seeing the message "Installation completed successfully".



10. Click on <Finish> to complete & exit the installation.

